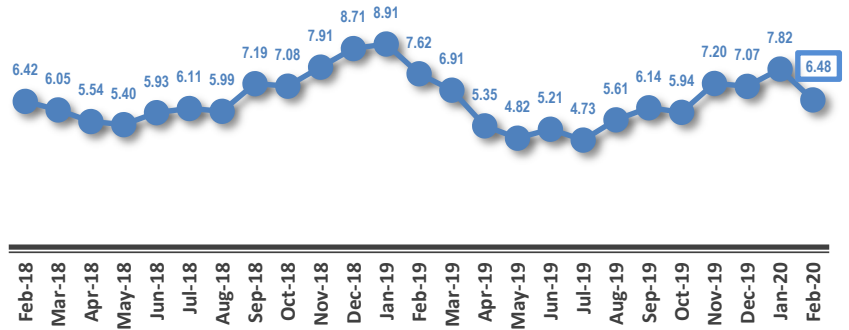
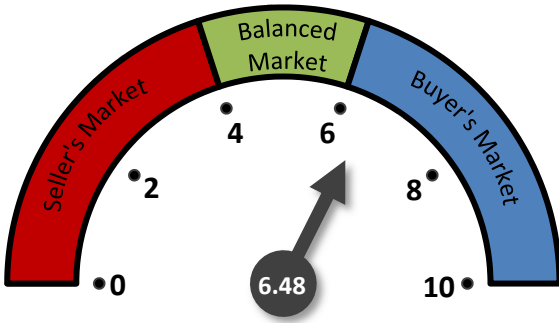
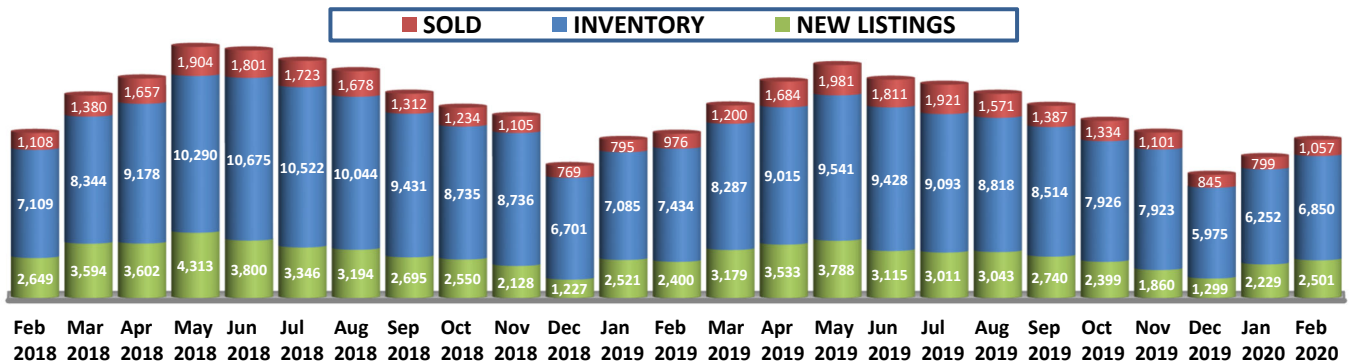


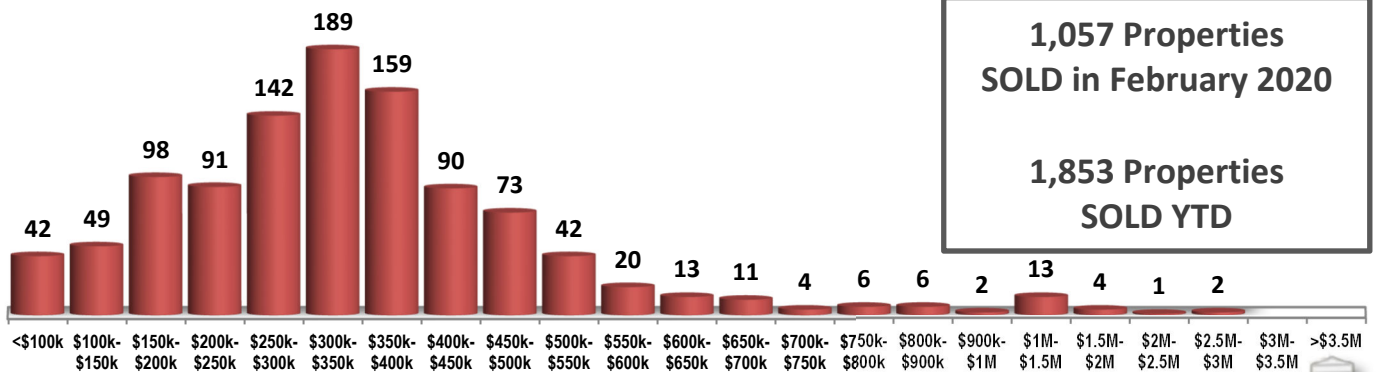
MONTHS OF INVENTORY



SOLD / INVENTORY / NEW LISTINGS



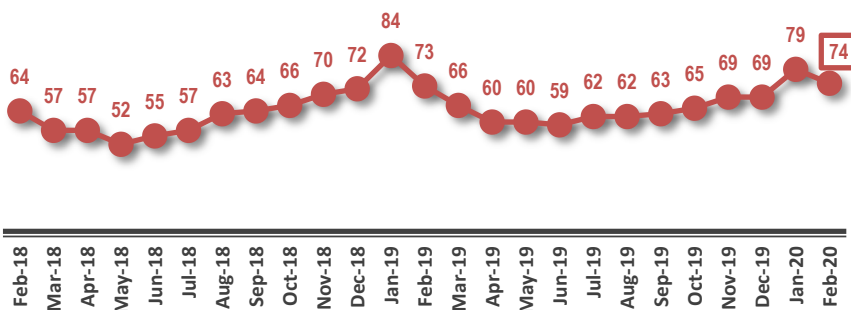
SOLD PROPERTIES BY PRICE RANGE



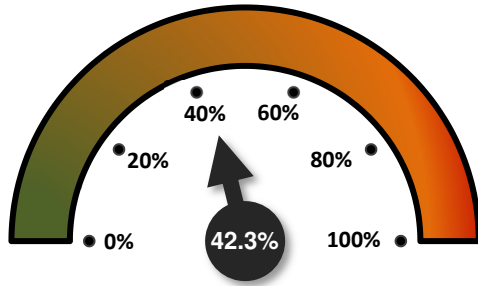
1,057 Properties SOLD in February 2020

1,853 Properties SOLD YTD

AVERAGE DAYS ON THE MARKET

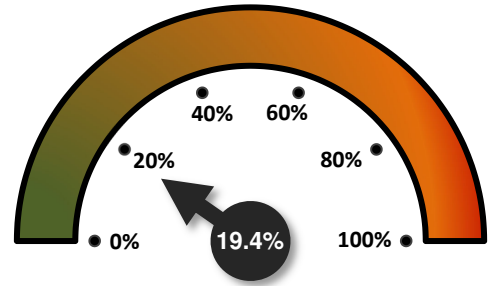


SALES-TO-NEW LISTINGS RATIO



↑ FROM 35.8% IN JANUARY 2020
↑ FROM 40.7% IN FEBRUARY 2019

ODDS OF SELLING IN 90 DAYS OR LESS

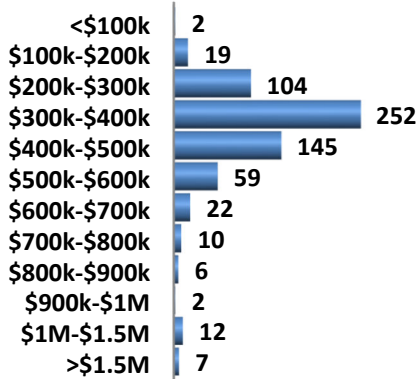


↓ FROM 20.6% IN JANUARY 2020
↑ FROM 17.1% IN FEBRUARY 2019

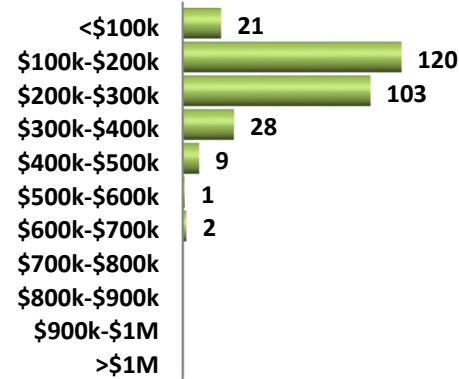
DETAILS BY PROPERTY TYPE

| | DETACHED SINGLE FAMILY HOMES | CONDOMINIUMS | DUPLEXES / ROW HOUSES |
|-----------------------------|------------------------------|--------------|-----------------------|
| AVERAGE SOLD PRICE | \$426,191 | \$212,520 | \$321,892 |
| MEDIAN SOLD PRICE | \$378,000 | \$200,000 | \$317,500 |
| SOLD PROPERTIES | 640 | 284 | 104 |
| SOLD PROPERTIES YTD | 1,131 | 469 | 199 |
| NEW LISTINGS | 1,385 | 796 | 240 |
| SALES-TO-NEW LISTINGS RATIO | 46.2% | 35.7% | 43.3% |
| AVERAGED DAYS ON THE MARKET | 71 | 74 | 80 |

SINGLE FAMILY DETACHED SOLD BY PRICE RANGE



CONDOMINIUMS SOLD BY PRICE RANGE



AVERAGE SOLD PRICES OVER 2 YEARS

