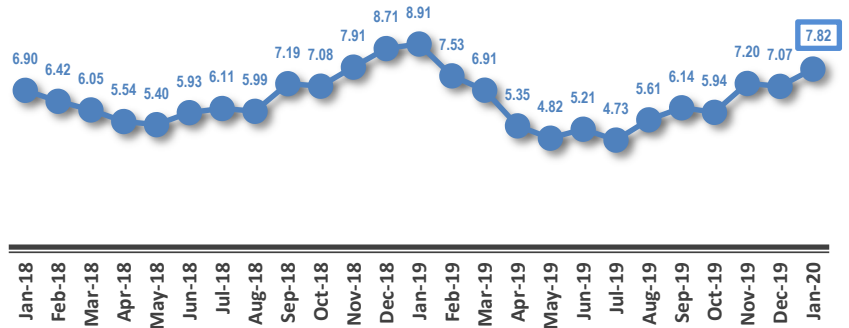
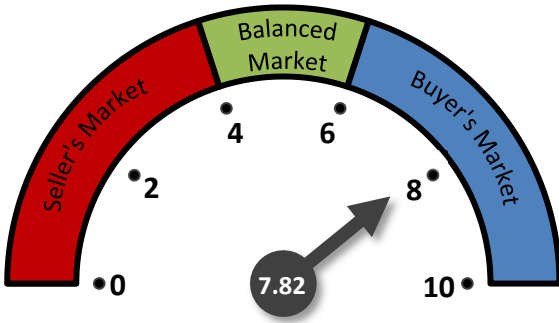
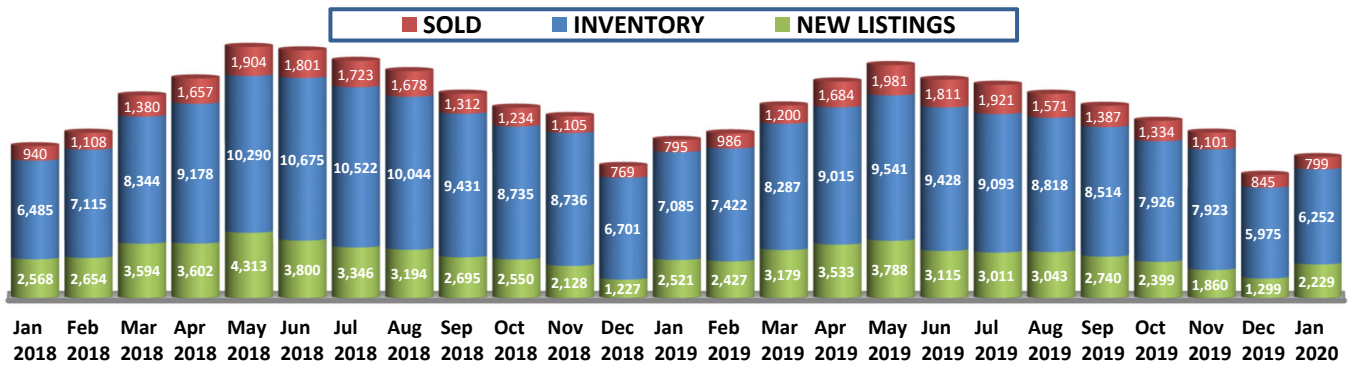


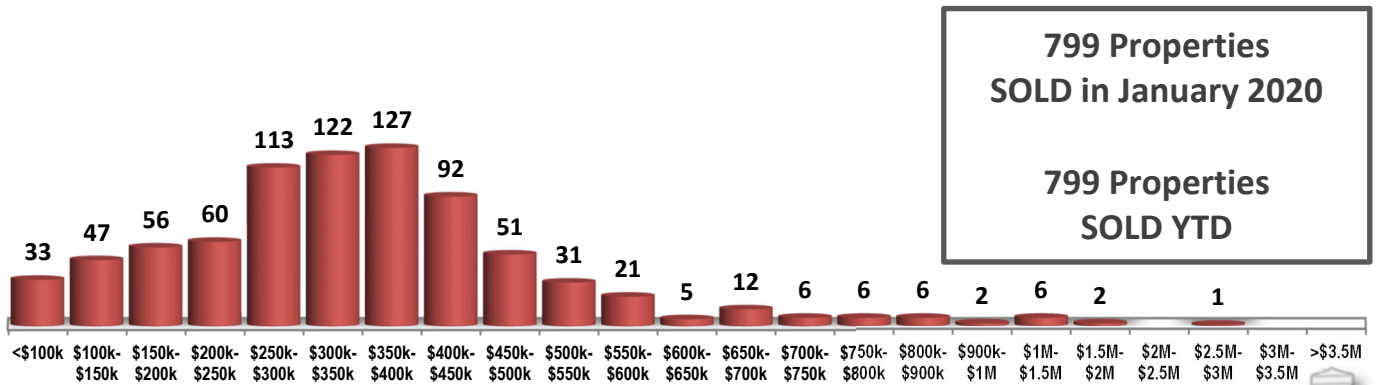
MONTHS OF INVENTORY



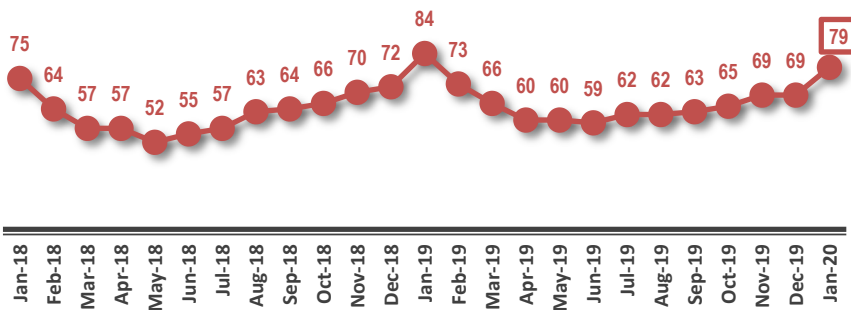
SOLD / INVENTORY / NEW LISTINGS



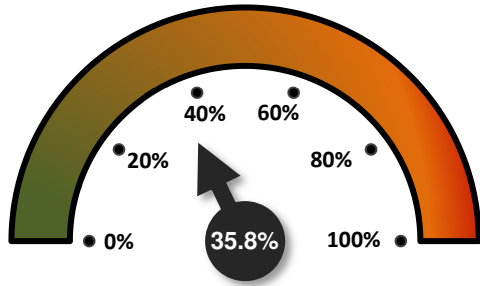
SOLD PROPERTIES BY PRICE RANGE



AVERAGE DAYS ON THE MARKET

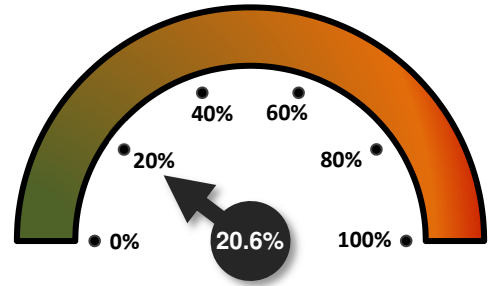


SALES-TO-NEW LISTINGS RATIO



↓ FROM 65.1% IN DECEMBER 2019  
 ↑ FROM 31.5% IN JANUARY 2019

ODDS OF SELLING IN 90 DAYS OR LESS

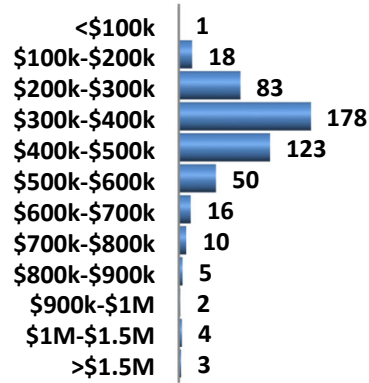


↓ FROM 23.3% IN DECEMBER 2019  
 ↑ FROM 18.3% IN JANUARY 2019

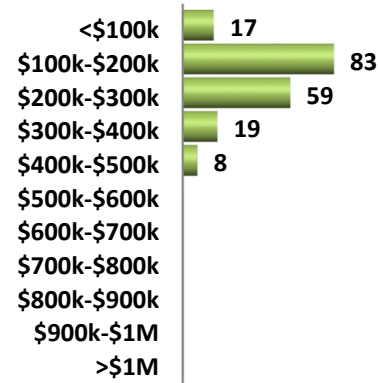
DETAILS BY PROPERTY TYPE

	DETACHED SINGLE FAMILY HOMES	CONDOMINIUMS	DUPLEXES / ROW HOUSES
AVERAGE SOLD PRICE	\$413,954	\$204,355	\$338,815
MEDIAN SOLD PRICE	\$384,000	\$188,750	\$315,000
SOLD PROPERTIES	493	186	95
SOLD PROPERTIES YTD	493	186	95
NEW LISTINGS	1,239	704	214
SALES-TO-NEW LISTINGS RATIO	39.8%	26.4%	44.4%
AVERAGED DAYS ON THE MARKET	73	83	85

SINGLE FAMILY DETACHED SOLD BY PRICE RANGE



CONDOMINIUMS SOLD BY PRICE RANGE



AVERAGE SOLD PRICES OVER 2 YEARS

